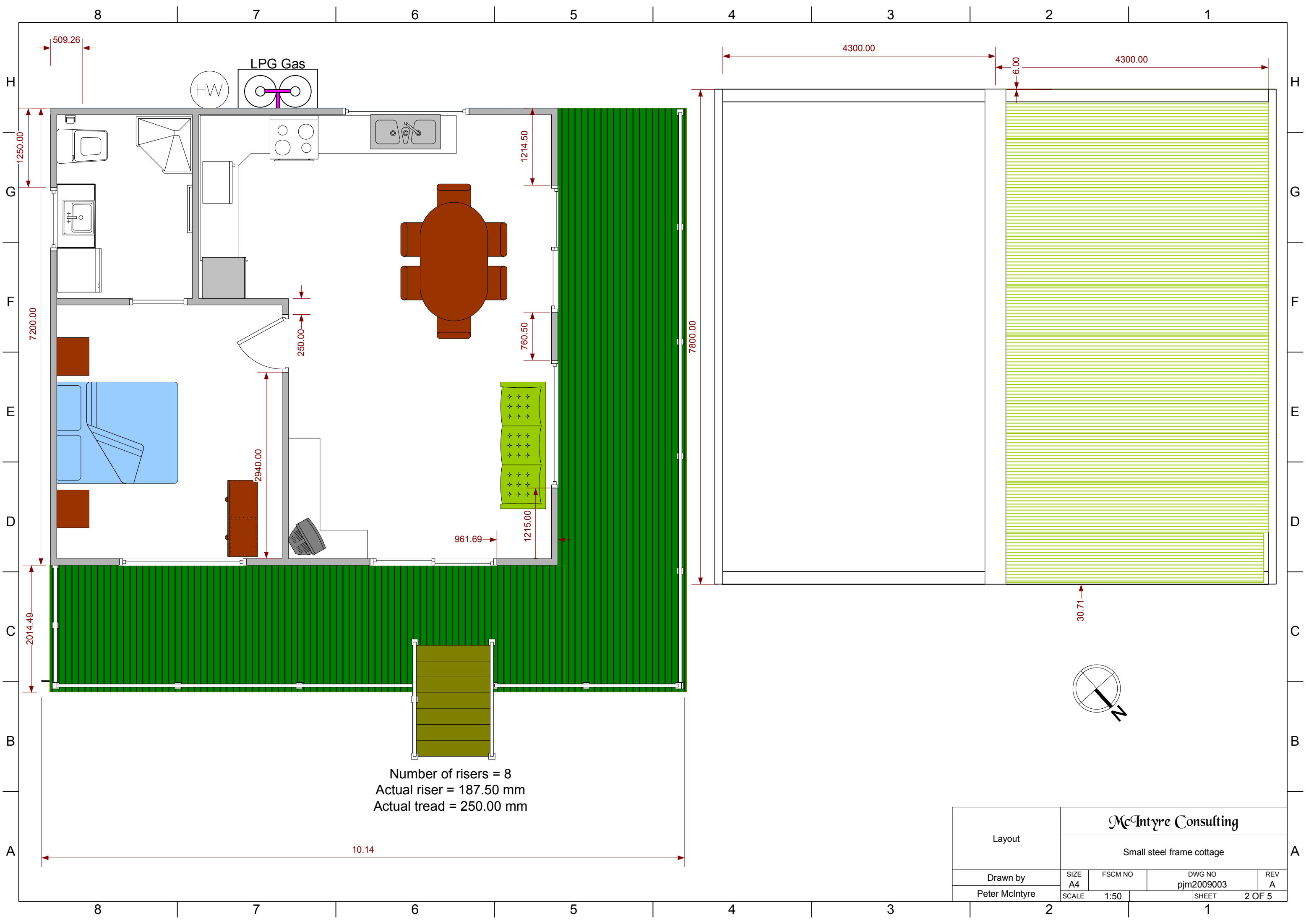


**Footings**

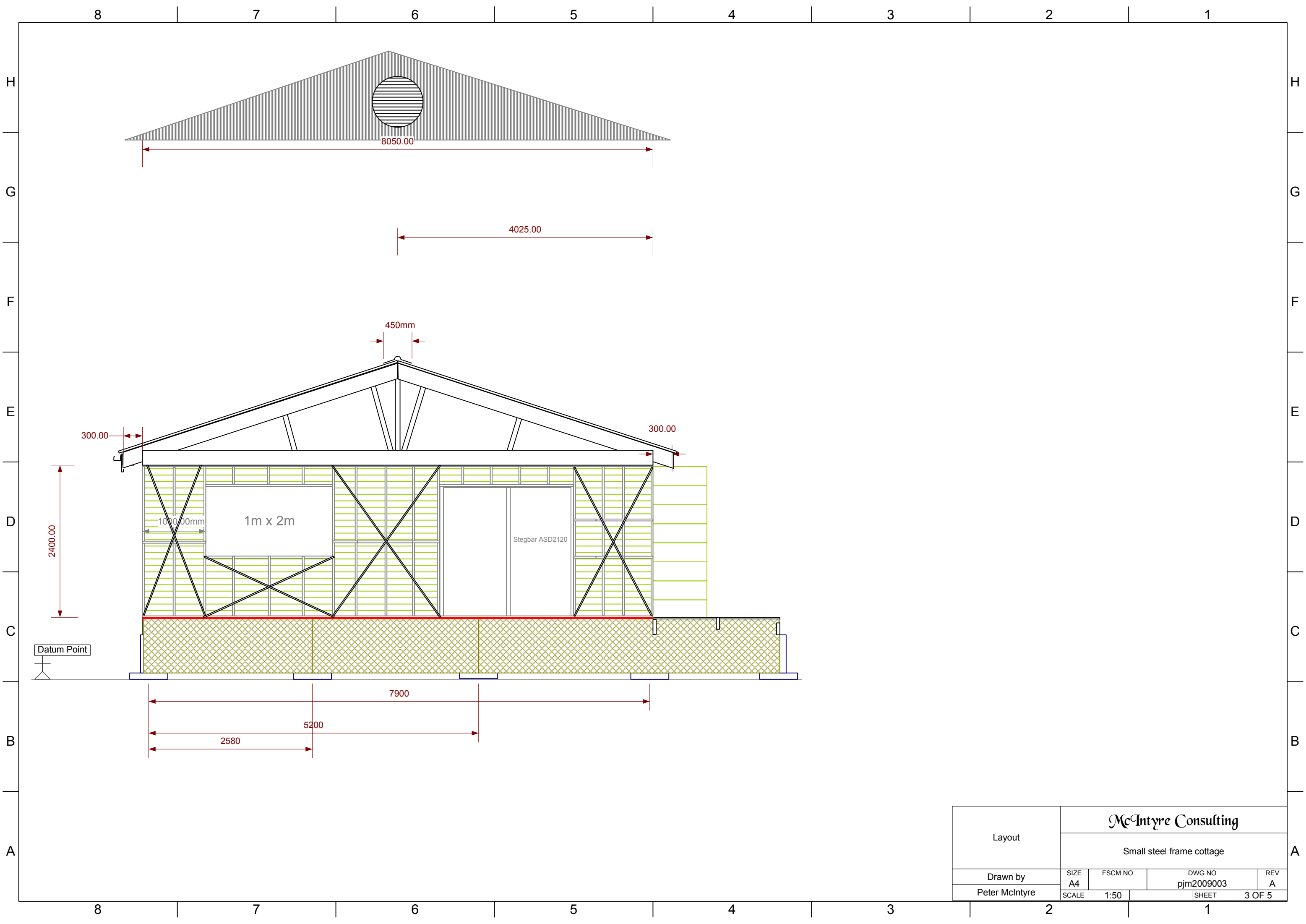
The footings are 300mm reinforced concrete cardboard tube type Construction. A concrete pad 600mm x 600mm is constructed as a base. The top of the footings should allow for tie-downs for the bearers

Footings, bearers and Joists	<b>McIntyre Consulting</b>			
	Small steel frame cottage			
Drawn by	SIZE A4	FSCM NO	DWG NO pjm2009003	REV A
Peter McIntyre	SCALE	1:50	SHEET	1 OF 5

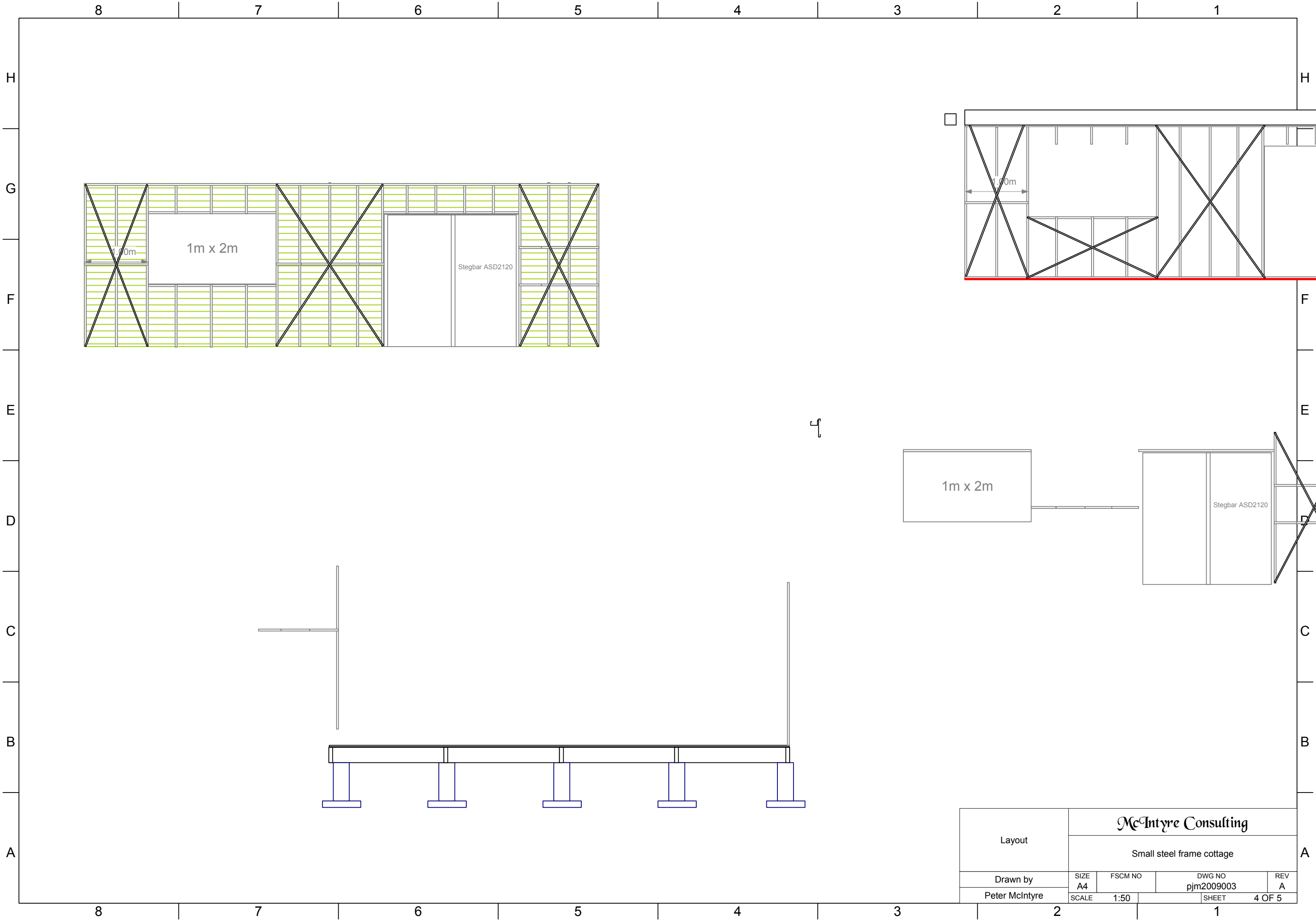


Number of risers = 8  
 Actual riser = 187.50 mm  
 Actual tread = 250.00 mm

Layout	McIntyre Consulting			
	Small steel frame cottage			
Drawn by	SIZE	FSCM NO	DWG NO	REV
Peter McIntyre	A4		pjm2009003	A
	SCALE	1:50	SHEET	2 OF 5



Layout	McIntyre Consulting			
	Small steel frame cottage			
Drawn by	SIZE A4	FSCM NO	DWG NO pjm2009003	REV A
Peter McIntyre	SCALE	1:50	SHEET	3 OF 5



8 7 6 5 4 3 2 1

H H

G G

F F

E E

D D

C C

B B

A A

8 7 6 5 4 3 2 1

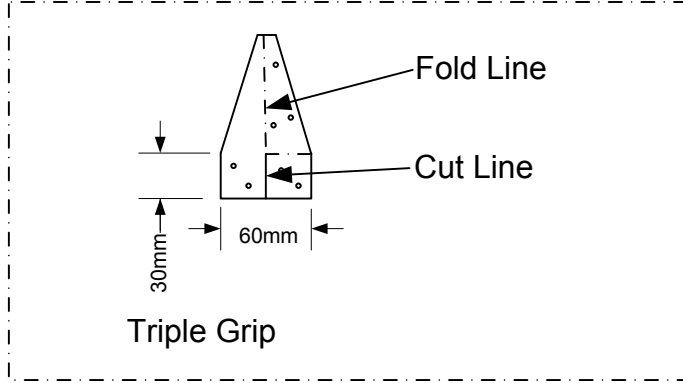
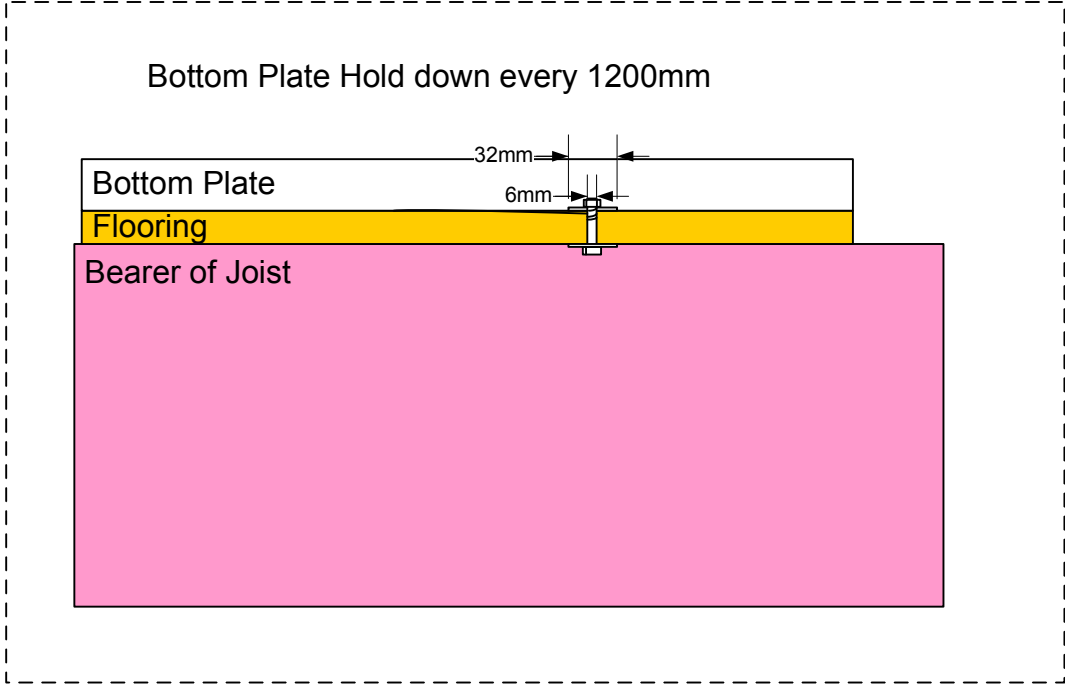
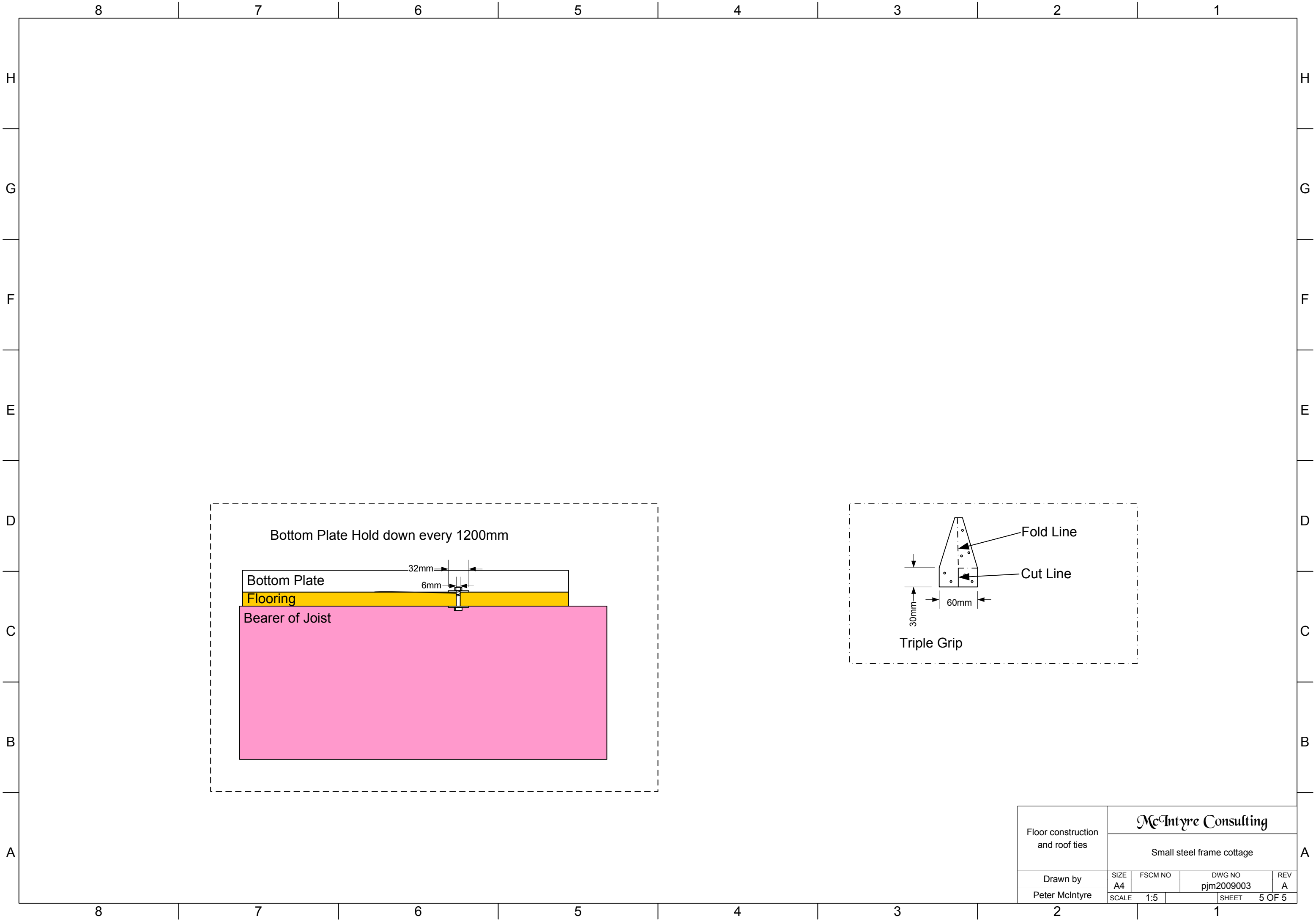
1m x 2m

Stegbar ASD2120

1m x 2m

Stegbar ASD2120

Layout	McIntyre Consulting			
	Small steel frame cottage			
Drawn by	SIZE	FSCM NO	DWG NO	REV
Peter McIntyre	A4		pjm2009003	A
	SCALE	1:50	SHEET	4 OF 5



Floor construction and roof ties	<b>McIntyre Consulting</b>			
	Small steel frame cottage			
Drawn by	SIZE A4	FSCM NO	DWG NO pjm2009003	REV A
Peter McIntyre	SCALE 1:5	SHEET 5 OF 5		